



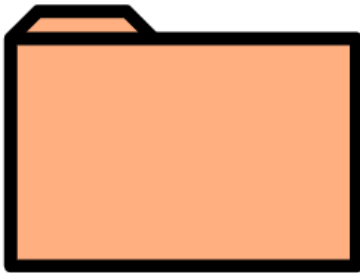
Clyde Creek Primary School – Specialist Campus Enrolment Policy

Enrolment means registering to join a school.

Background, Purpose and Scope



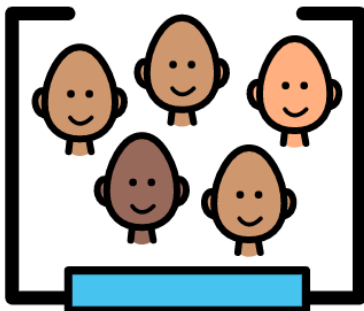
Clyde Creek Primary School – Specialist Campus provides programs for students who have an intellectual disability.



This policy will explain how enrolment decisions are made and the documents you will need to provide as evidence for enrolment.

Students may enrol at **any time of the school year**.

They must be **aged 5-12** and have an **intellectual disability**.



The school will check and consider how many students are already enrolled when making their decision.

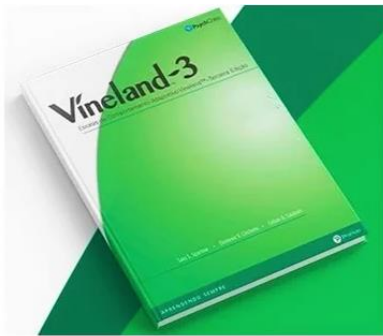


Enrolment Criteria

To enrol at this school, you will need to have:



- A signed psychologist's report (from within 24 months). This must show a score of 70 or below on a standardised individual test of intelligence.



- 2 significant deficits in adaptive behaviour on an approved standardised test. This may be a *Vineland Adaptive Behaviour Scale composite* score of 70 or below.
- An ongoing history of learning difficulties during the school years which is expected to continue.

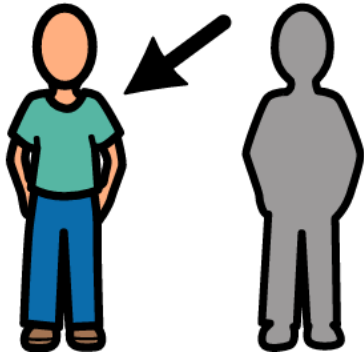


The school can help you find this evidence. Please contact us for more support.

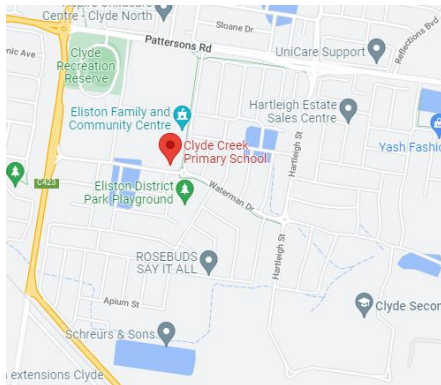


Priority Order of Placement

Sometimes the school cannot accept all applications from students who meet the conditions above. They will decide who can enrol based on the following order:



1. Students who live with a sibling who is already at the school.



2. Students who live closest to the school.

The school may ask for documents and information that prove that a student lives at an address.

This could be:

- Rental agreements
- Unconditional contracts of sale
- Or other documents that show the same address and parent or carer's name as on the enrolment form.



Appeal Process



Parents and carers can appeal against a decision. They should write a letter or email to the school and the Department will be in touch with more information.

An *appeal* is a request to change a decision.